



Made in Germany



enjoy mobility

Product catalogue 2020

# Faisst – Your specialist for highquality aluminium cases. Made in Germany.

[www.faisst-cases.com](http://www.faisst-cases.com)



Alu Robust

Alu Light

Alu Design

## Faisst products are the number one choice!

This is what our customers say in reference to our extensive product selection which we are constantly expanding. We have been consistently building on our collection for many years and are always improving our existing products

It is important for us to take on board the requirements of our customers and to implement them in the form of good quality, tried-and-tested products. The high level of personalisation is accompanied by comprehensive advice and in-depth development for every customer.

Our production process is order-focused and thanks to the very latest manufacturing possibilities, we offer exceptional flexibility with short delivery times. The global purchasing of all the components guarantees competitive prices for top class brand products from Faisst. Recognisability across all our product ranges is a key feature of our brand. The name Faisst stands for modern cases, bags and boxes of professional quality – our customers can rely on that!



Markus Bächtold, CEO

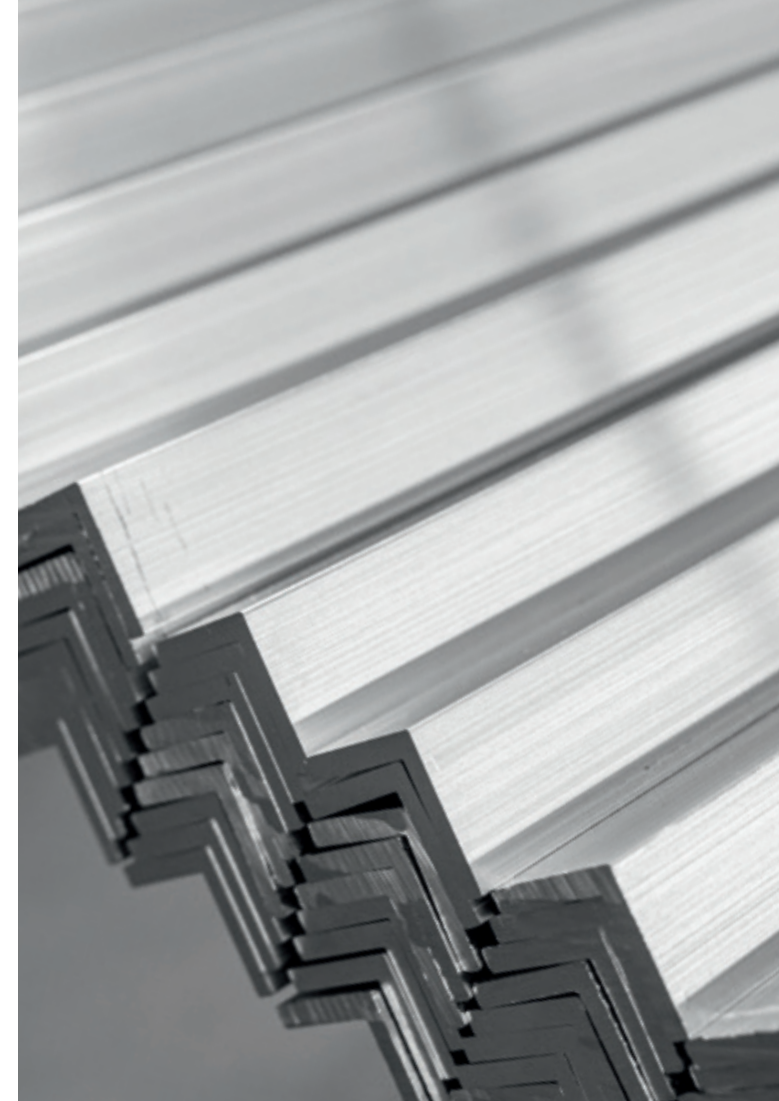


Kling Group company building



Made in  
Germany  
since 1963

# Faisst – more than 55 years successful business.

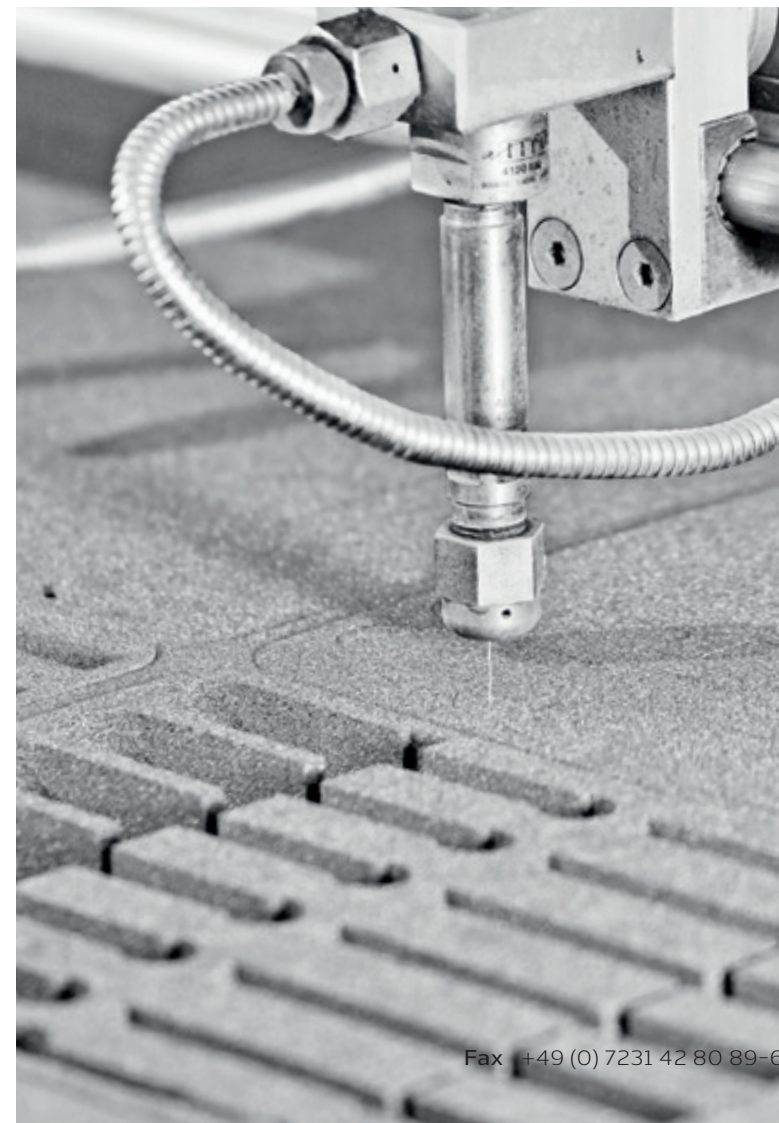


## A success story. Founded 1963.

With increasing industrialisation, the need for protective and convenient cases with which commercial travellers could carry and present their goods, has grown significantly. This demand prompted the craftsman Karl Faisst, over 50 years ago, to begin with the development and manufacture of professional transportation cases. In 1963, the first Faisst cases left the newly built factory in Altensteig, located in the northern part of the Black Forest, and started their triumphal march around Germany and neighbouring European countries. This spirit of innovation re-mains alive today at Faisst. Although modern machinery supports the production of the high quality cases, it is still the people who develop and manufacture each case according to the customer's individual requirements for the goods or products that will be transported inside

The first steps in designing your individual Faisst case begins with the competent advice of our experienced engineers and a detailed elaboration of your requirements. Technical know-how and high quality materials are the basis for the case's longevity in daily use. The production process encompasses production steps that are processed by machines with the highest precision as well as production steps that may require manual work. Both machines and skilled and specialised staff are important components of our production. The integration of all production stages strategically under one roof guarantees the best possible quality and short delivery times. This affords Faisst the ability to deliver a large-scale production capacity as well as the production of smaller unit quantities – both at attractive and fair market prices.

**Faisst – Quality „Made in Germany“.**





High quality.  
Precise.  
Individual.

# Quality, individuality and longevity

## Attention to detail

At Faisst, we have always valued meaningful and long-term relationships with our customers and this is reflected in the company's spirit. Individual Faisst cases are the result of discussing, listening, advising and fulfilling all the needs of a perfectly functioning product. This development process has to grow and evolve and takes into account all the details that are important to create a valuable product for the customer in everyday life. For our products, we select in advance the best materials and components from world-wide suppliers whom we have been working with for many years. Our experienced production staff knows how to perfectly combine craftsmanship with modern production technology. This guarantees consistent quality and high functionality for years.



Perfection down to the last detail



Gradually extendable trolley of the highest quality



Comfortable and quiet maneuvering



Unmistakable thanks to its own built-in / add-on parts



Only original with Faisst logo laser engraving



Identification numbers ensure consistent quality



# Faisst Products

## Aluminium cases



**10** Alu Design



**14** Alu Light

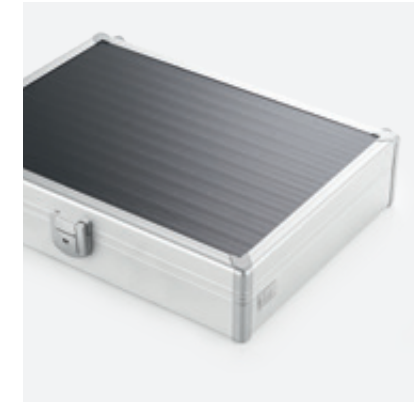


**18** Alu Framecase Plus

## Aluminium- and plastic boxes



**38** Alu Briefcase



**42** Alu Framecase



**49** Smart Case

## Flightcases



**22** Alu Robust



**26** Alu Solid



**28** Cargo Air

## Softbags



**46** Shell Case



**48** Travel Line

## Showcases



**52** Alu Cube

## Hard shell cases



**32** Vario Case



**36** Air Line

Varied.  
Variable.  
Made to  
measure.

## Delivery boxes



**50** X-press Box

Accessories  
Branding options  
Interior examples

From page **56**

✈ Hand luggage format



Individual sizes  
already from 5  
items

Accessories p. 56

Branding options p. 60

Interiour examples p. 62

## Series Alu Design

Elegance is an attitude in life – perfectly matching with the case series Alu Design. Finely-rounded aluminium profiles and harmoniously designed edges made from impact proof plastic, create an elegant appearance and an incredibly long service life. The resistant surface in trendy colours, and optional digital print offers a great variety for the individualisation of your cases. We are able to manufacture almost any possible dimension, depending on the demands of the product that will be transported and protected by the case. The comprehensive range of accessories offers additional options and guarantees greatest creative freedom for the customer.



Elegant.  
Versatile.  
Modern.



Unique design of the case series  
Light aluminum frame construction with  
impact-resistant plastic corners  
Sturdy telescopic handle optional  
Ergonomic case handle



Individually printable surface „Reef“  
available in 6 colours  
Large wheels made of durable PVC for  
smooth rolling optional  
High quality case locks



# Alu Design

Colour and equipment examples



Black / Black



Umber / Silver



White / Black

Maximum individuality through free combination of surfaces, profile colours and case corners



Metallic dark blue / Silver



Metallic anthracite / Silver

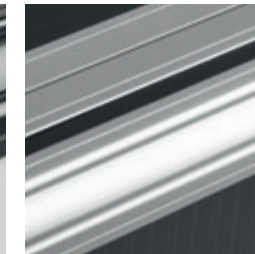
## Corners and profiles



99120  
Silver metallic



99200  
Black



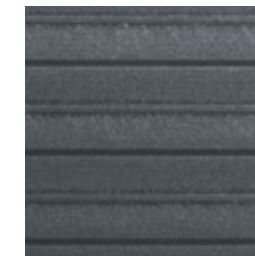
99120  
Aluminium nature



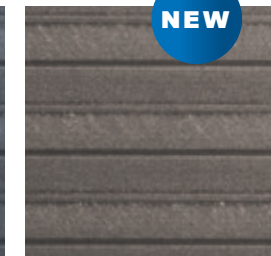
99200  
Black

## Surface Reef

The specially developed surface Reef is available in six different colours. The high quality PVC-Film in aluminium look is splash-proof and impresses with its distinctive, unique design.



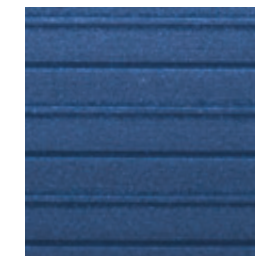
77803  
Metallic anthracite



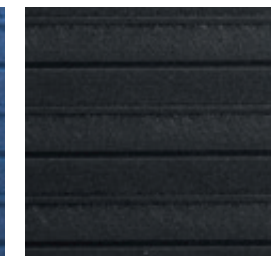
77100  
Umber



77120  
Metallic silver



77153  
Metallic dark blue



77200  
Black



77300  
White

Use our versatile options for your advertising!

[Versatile printing opportunities p. 60](#)

We adapt every case insert to your products.

Custom-made foam inserts ensure optimal protection of the goods to be transported

[Interiour examples p. 62](#)





Individual sizes  
already from 5  
items

Accessories p. 56

Branding options p. 60

Interior examples p. 62

## Series Alu Light

Alu Light is the case series most appreciated by sales representatives. Robust profiles made of aluminum and resilient metal corners – that is the new design of the classic industrial case. The resistant surface in trendy colours, and optional digital print offers a great variety for the individualisation of your cases. We are able to manufacture almost any possible dimension – depending on the demands of the product that will be transported and protected by the case. The comprehensive range of accessories offers additional options and guarantees creative freedom for the customer.



Classical.  
Functional.  
Attractive.



Unique design of the case series  
Lightweight aluminum frame construction  
with impact-resistant metal corners and  
aluminum profiles  
Sturdy telescopic handle optional  
Ergonomic case handle  
Large wheels made of durable PVC for  
smooth rolling optional



Individually printable surface „Reef“  
available in 6 colours  
High quality case locks and hinges



# Alu Light

## Colour and equipment examples

Maximum individuality through free combination of surfaces, profile colours and case corners



Metallic dark blue / Aluminium nature

Metallic anthracite / Black



Black / Black

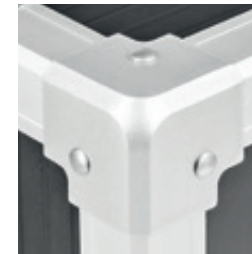


White / Aluminium nature



Umber / Black

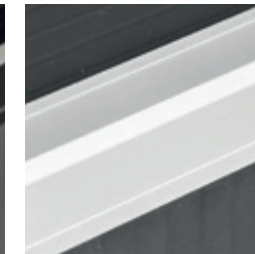
## Corners and profiles



99120  
Silver metallic



99200  
Black



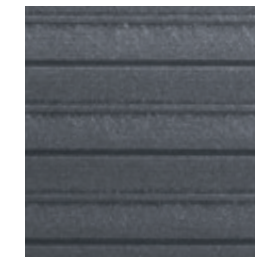
99120  
Aluminium nature



99200  
Black

## Surface Reef

The specially developed surface Reef is available in six different colours. The high quality PVC-Film in aluminium look is splash-proof and impresses with it's distinctive, unique design.



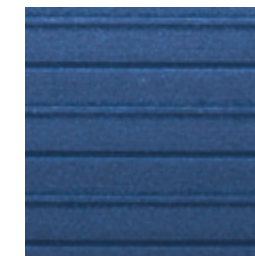
77803  
Metallic anthracite



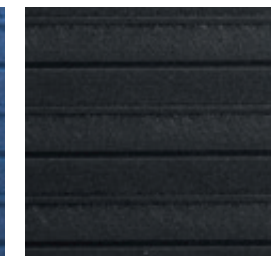
77100  
Umber



77120  
Metallic silver



77153  
Metallic dark blue



77200  
Black



77300  
White

Use our versatile options for your advertising!

[Versatile printing opportunities p. 60](#)

We adapt every case insert to your products.

Custom-made foam inserts ensure optimal protection of the goods to be transported

[Interiour examples p. 62](#)





Series



# Alu Framecase<sup>+</sup> Plus



Individual sizes  
already from 5  
items

Accessories p. 56

Branding options p. 60

Interior examples p. 62

The Alu Framecase Plus from Faisst convinces with its double-walled structure, the corner connectors made of impact-resistant plastic with the possibility of stacking, as well as the versatile design options for lid and base plates, including individual printing. The cases are available in two heights and can be individually adjusted in length and width to the contents of the case.

Thanks to the double-walled aluminum side profiles, this case series is ideal as a basis for technical installations as well as a convincing presentation case for high-quality products. Our experts will be happy to advise you on the right interior.



Elegant.  
Technically.  
Rethought.



Unique design of the case series  
Stable aluminum frame construction with  
stackable corners  
Ergonomic case handle



Individually printable surface „Reef“  
available in 6 colours  
High quality case locks and hinges



# Alu Framecase<sup>+</sup> Plus

## Colour and equipment examples

Maximum individuality through free combination of surfaces, profile colours and case corners



Metallic silver / Silver



Metallic anthracite / Silver

## 8 standard sizes

### Individual sizes from 5 items

Interior measurements (Length x Width x Height Bottom + Height Lid)

#### Height 140 mm

<b>FP-5F140</b>	450x350x100+40 mm
<b>FP-7F140</b>	500x400x100+40 mm
<b>FP-8F140</b>	600x400x100+40 mm
<b>FP-9F140</b>	700x400x100+40 mm

#### Height 180 mm

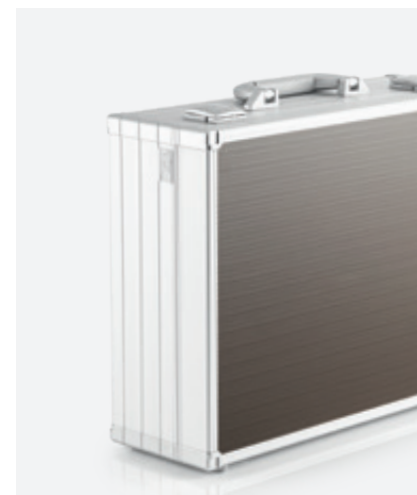
<b>FP-5F180</b>	450x350x140+40 mm
<b>FP-7F180</b>	500x400x140+40 mm
<b>FP-8F180</b>	600x400x140+40 mm
<b>FP-9F180</b>	700x400x140+40 mm



Black / Silver



Metallic dark blue / Silver



Umber / Silver

## Corners and profiles



99120  
Silver



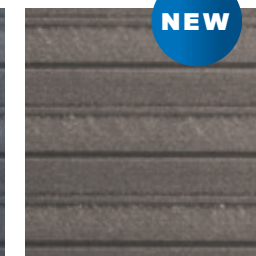
99120  
Silver

## Surface Reef

The specially developed surface Reef is available in six different colours. The high quality PVC-Film in aluminium look is splash-proof and impresses with its distinctive, unique design



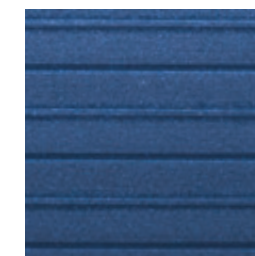
77803  
Metallic anthracite



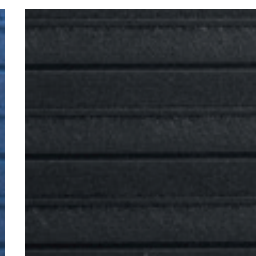
77100  
Umber



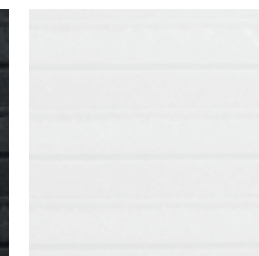
77120  
Metallic silver



77153  
Metallic dark blue



77200  
Black



77300  
White

Use our versatile options for your advertising!

[Versatile printing opportunities p. 60](#)

We adapt every case insert to your products.

Custom-made foam inserts ensure optimal protection of the goods to be transported

[Interior examples p. 62](#)





## Series Alu Robust

Individual sizes  
already from 5  
items

Accessories p. 56

Branding options p. 60

Interiour examples p. 62

The case series Alu Robust is developed for particularly demanding applications and constant exposure to heavy loads. Alu Robust cases show reliability in daily use even with loads of up to 40 kg, and under difficult conditions.

The available range of aluminium surfaces gives the cases an elegant appearance, professionally presenting your goods at their best. There is considerable flexibility in design due in the varied applications of logos and graphics. We are able to manufacture almost any dimension – depending on the demands of the product that will be transported and protected by the case.



Durable.  
Robust.  
Real.



Frame construction in aluminium  
Stable telescopic handle optional  
Resistant shackle lock



Individually printable surface „Wave“  
Corner wheels in metal housing optional



# Alu Robust

## Colour and equipment examples

Maximum individuality through free combination of surfaces, profile colours and case corners



Ask us about your optional accessories.

[Further special accessories from p. 56](#)



Hinged handle metal in silver



Stair protection strips in black



Rounded corners

## Corners and profiles



99122  
Natural aluminium



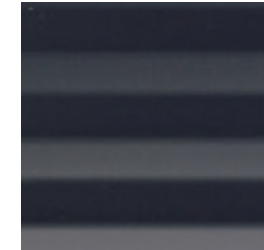
90121  
Chrome

## Surface Wave

The surface Wave is available in three different colours. The high-quality and robust aluminum sheets ensure more stability and they also look elegant and professional



76121  
High gloss aluminium



76203  
Black

Use our versatile options for your advertising!

[Versatile printing opportunities p. 60](#)



We adapt every case insert to your products.

Custom-made foam inserts ensure optimal protection of the goods to be transported

[Interior examples p. 62](#)



Standard sizes  
from 1 item

Accessories p. 56

Branding options p. 60

Interior examples p. 62

Also available online:  
[www.faisst-shop.de](http://www.faisst-shop.de)

## Series Alu Solid

Looking for an economical solution for industry cases? Voilà, here it is – the case series Alu Solid. You can choose your ideal case from seven standard sizes, featuring perfectly processed handles and an attractive appearance due to colour-matched locks, edges and handles. In all sizes, you have plenty of space for individual printing on the outside and inside of the case.

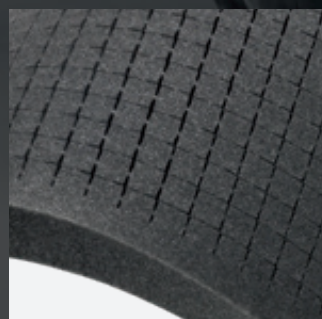


Ask us about your  
optional accessories.

Further special accessories from p. 56



Attachable trolley



Inserts made of grid foam  
and profiled foam for every  
case size



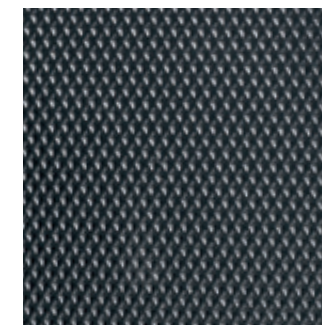
Individual digital printing



Shoulder strap



99120 Silver  
Surface Pearl Classic



99200 Black  
Surface Pearl Classic



High quality profile



Stable metal corners



Sizes CAL-001 to CAL-005 available in black

### 7 standard sizes

Individual sizes from 150 pieces

CAL-001	400x300x65+35 mm
CAL-002	450x350x115+35 mm
CAL-003	450x350x165+35 mm
CAL-004	500x400x115+35 mm
CAL-005	500x400x165+35 mm
CAL-006	600x400x165+35 mm
CAL-007	700x400x165+35 mm



CAL-007

CAL-006

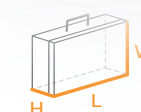
CAL-005

CAL-004

CAL-003

CAL-002

CAL-001



Interior measurements (Length **L** x Width **W** x Height Bottom **H**)





## Series Cargo Air

Any equipment needing to be transported is best protected with our case series Cargo Air – even for longer journeys world-wide. Whether on land, on the water or in the air – the Cargo Cases are the answer.

With reduced weight of about 25 % compared to conventional transport cases, this case series is especially easy to handle and better yet, due to the lighter weight, reduce transportation costs. Due to their sandwich-construction and honeycomb structure, there is no need for compromise on the stability of the cases. The resistant surfaces ensure longevity and an attractive appearance.

Individual sizes  
already from 5  
items

Accessories p. 56

Branding options p. 60

Interior examples p. 62



Versatile.  
Spacious.  
Weight-reduced.



Metal corners and aluminium profiles  
Resistent butterfly locks  
Stable birch plywood with wide range of  
surface colours



Hinged handle in metal  
Corner wheels in metal housing optional  
Rounded corners optional



# Cargo Air

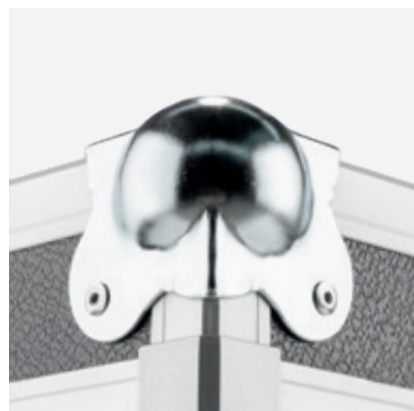
## Colour and equipment examples

Maximum individuality through free combination of surfaces, profile colours and case corners



Ask us about your optional accessories.

[Further special accessories from p. 56](#)



Rounded corners



Stable wheels with braking function

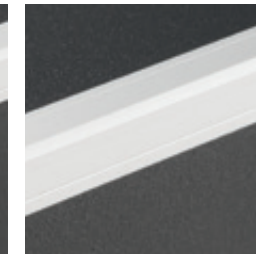


Installation of a trolley

## Corners and profiles



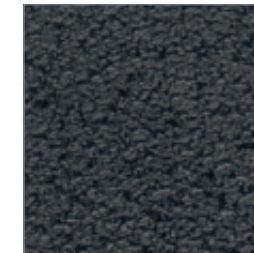
90121  
Chrome



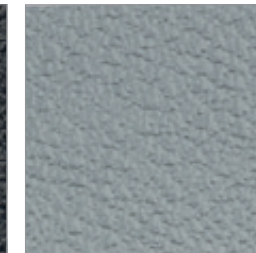
99122  
Natural aluminium

## Surface „Surf“

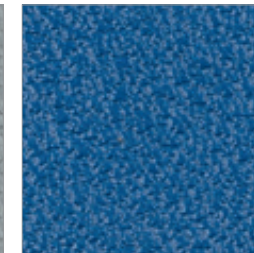
The surface „Surf“ captivates especially due to its robustness, which is why it is used primarily in cargo cases. The surface of the case is splash-proof and, due to its nature, less susceptible to scratches and damage in general. In addition to the three standard colours, the surf surface is also available in numerous special colours.



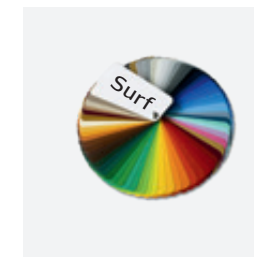
76200  
Black  
RAL 9004



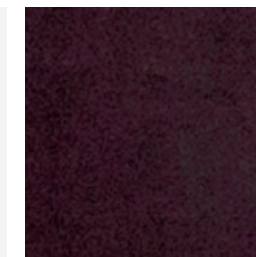
76807  
Grey  
RAL 7046



76151  
Blue  
RAL 5010



More colours on p. 70



76101  
Phenol plain  
Dark brown

Use our versatile options for your advertising!

[Versatile printing opportunities p. 60](#)

We adapt every case insert to your products.

Custom-made foam inserts ensure optimal protection of the goods to be transported

[Interiour examples p. 62](#)





# Series Vario Case

High-quality materials and simple design are the key characteristics of this extremely attractive collection of presentation cases.

They offer a smart alternative for the storage and presentation of high-quality products. Customised inserts and personalised logo printing can be added to implement your requirements.

The standard range of six different sizes covers every need and will also create the perfect setting for your products.



Standard sizes  
from 10 items per  
size

Accessories p. 56  
Branding options p. 60  
Interior examples p. 62  
Also available online:  
[www.faisst-shop.de](http://www.faisst-shop.de)



Robust plastic corner wheels optional  
Spring-loaded, ergonomic case handle  
High quality case locks and hinges

New.  
Light-weighted.  
Convincing.



Custom-made case inserts optional  
Printable, durable surfaces „Shine“ and „Grip“  
made of impact-resistant ABS



# Vario Case

## Colour and equipment examples



Glossy white / Black

## 6 Standard sizes

Individual sizes from 100 pieces

FCA1-100	400x300x60+40 mm
FCA2-100	450x350x60+40 mm
FCA3-100	500x400x60+40 mm
FCA1-150	400x300x100+50 mm
FCA2-150	450x350x100+50 mm
FCA3-150	500x400x100+50 mm



Interior measurements (Length x Width x Height Bottom + Height Lid)



Metallic blue / Silver

Please notice: The installation of a trolley means an increase of the case of 65 mm

## Corners and profiles



99120  
Metallic silver



99200  
Black

## ABS-Surface Shine and Grip



80805  
Metallic anthrazit



80155  
Metallic blue



80120  
Metallic silver



80125  
Champagne silver



80305  
Glossy white



80205  
Metallic black



80210  
Black Grip

Use our versatile options for your advertising!

Versatile printing opportunities p. 60

We adapt every case insert to your products.

Custom-made foam inserts ensure optimal protection of the goods to be transported

Interior examples p. 62



Metallic anthrazit / Silver



Metallic black / Black



Three case heights | Metallic silver / Silver



Standard sizes  
from 1 item

Accessories p. 56

Branding options p. 60

Interiour examples p. 62

Also available online:  
[www.faisst-shop.de](http://www.faisst-shop.de)

## Series Air Line

The business case suited up – your perfect travel companion for any important appointment. Made of high quality materials, perfectly designed and extensively equipped with attractive details. The case series Air Line is amazingly light-weight and extremely robust. The integrated telescopic handle and the large wheels make manoeuvring easy even when the case is heavy. Two sturdy handles and the latest generation of combination locks make this case a pleasure to use. There is considerable flexibility in design due in the varied applications of logos and graphics. Our experts are happy to advise you in finding the perfectly fitting interiour design for your cases.



Unique design  
Case surface printable  
Protective plastic corners

Modern.  
Durable.  
Desirable.



Ergonomic case handle for  
maximum comfort  
TSA security combination lock  
Additional inserts possible

Two colours.  
Two sizes.

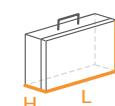


**FLI-01** 500x400x260mm (Exteriour)

**FLI-02** 600x450x280mm (Exteriour)

ca. 480x380x200mm (Usable interiour measurements)

ca. 580x430x220mm (Usable interiour measurements)



Interiour Measurements (Length x Width x Height)



Standard sizes  
from 10 items per  
size

Accessories p. 56

Branding options p. 60

Interior examples p. 62

Also available online:  
[www.faisst-shop.de](http://www.faisst-shop.de)

## Series Alu Briefcase

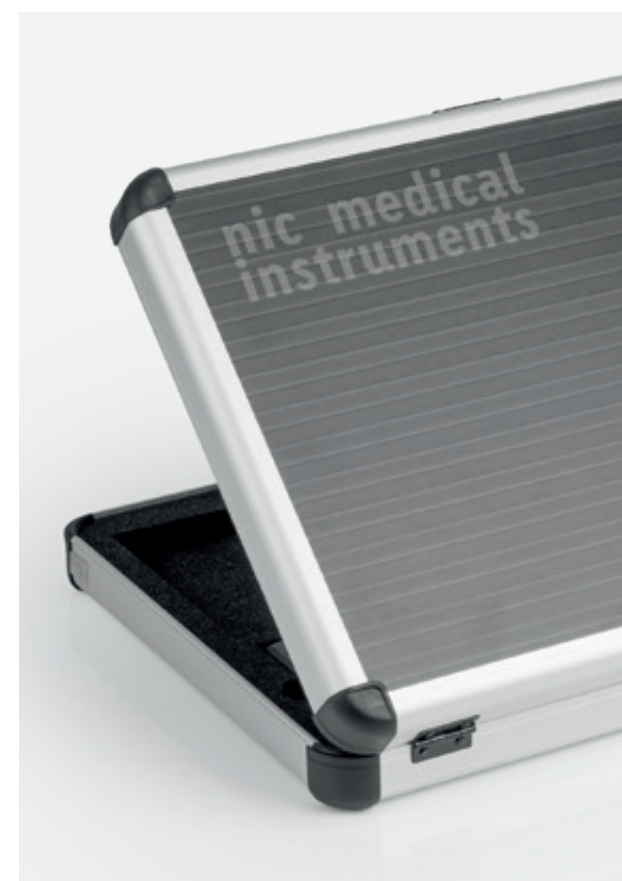
The lighter version of aluminium presentation etuis is particularly well suited for small parts and highly sensitive products. They also score points with their handy size since they can be stowed anywhere quickly: in the travelling bag, aluminium case or collection case. These are crucial arguments for travelling in particular, helping the traveller get from one appointment to the next in comfort.

The alu briefcases are available in many different sizes and can be equipped with a custom foam insert. This guarantees that your products stay firmly in their place and leave a perfect impression when you present them to your customers. We measure your products precisely and fabricate the insert using the most cost-effective production method.

Manageable.  
Practically.  
Convincing.



Stable aluminium frame construction  
Available in 2 heights: 25mm and 45mm  
Stackable corners in 6 colours



Special case handles optional  
Splash-proof  
High quality case locks and hinges  
Individually printable surface „Reef“  
available in 6 colours



# Alu Briefcase

## Colour and equipment examples



Figure height 45 mm

Maximum individuality through free combination of surfaces, profile colours and case corners

## 14 Standard sizes

Individual sizes from 25 pieces

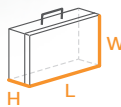
### Height 25 mm

CFV-1B25	240x145x12,5+12,5 mm
CFV-2B25	280x200x12,5+12,5 mm
CFV-3B25	320x230x12,5+12,5 mm
CFV-4B25	355x255x12,5+12,5 mm
CFV-5B25	395x290x12,5+12,5 mm
CFV-6B25	440x330x12,5+12,5 mm
CFV-7B25	500x400x12,5+12,5 mm

Interiour measurements (Length x Width x Height Bottom + Height Lid)

### Height 45 mm

CFV-1B45	240x145x22,5+22,5 mm
CFV-2B45	280x200x22,5+22,5 mm
CFV-3B45	320x230x22,5+22,5 mm
CFV-4B45	355x255x22,5+22,5 mm
CFV-5B45	395x290x22,5+22,5 mm
CFV-6B45	440x330x22,5+22,5 mm
CFV-7B45	500x400x22,5+22,5 mm



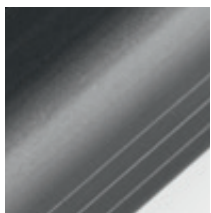
## Mix & Match



## Corners and surface Reef

The specially developed surface Reef is available in six different colours. The high quality PVC-Film in aluminium look is splash-proof and impresses with it's distinctive, unique design.

## Profiles



99200  
Black



99120  
Natural aluminium



Metallic anthracite



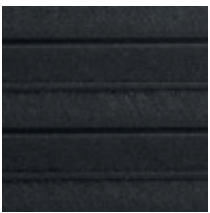
Umbur



Metallic silver



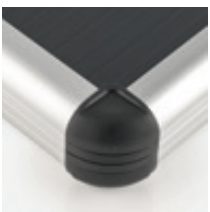
Metallic dark blue



Black



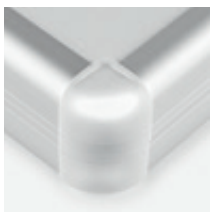
White



Grey



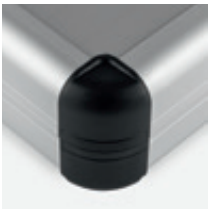
Umbur



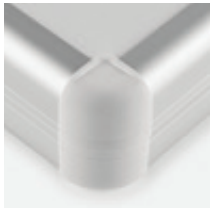
Silver



Blue



Black



White



Use our versatile options for your advertising!

Versatile printing opportunities p. 60

We adapt every case insert to your products.

Custom-made foam inserts ensure optimal protection of the goods to be transported

Interiour examples p. 62



# Series Alu Framecase

Standard sizes  
from 10 items per  
size

Accessories p. 56

Branding options p. 60

Interiour examples p. 62

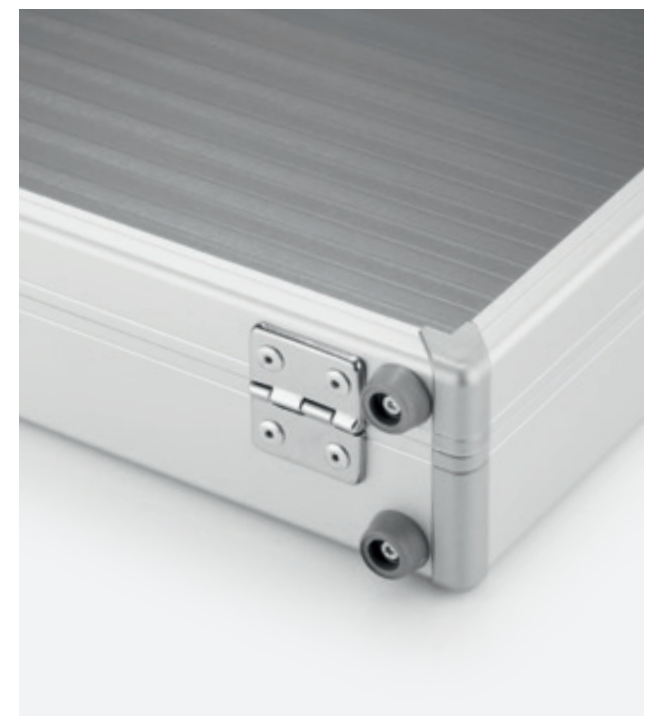
Also available online:  
[www.faisst-shop.de](http://www.faisst-shop.de)

Premium materials and a simple design define the character of this very attractive etui series. A clever alternative for the effective storage and presentation of high-end products. Tailor-made inserts and individual logo printing are implemented according to your special requirements. The standard selection of twelve different sizes leaves no wish unfulfilled and provides the proper setting for your products.



Stable frame construction in aluminium  
High quality case locks and hinges  
Individually printable surface „Reef“  
available in 6 colours  
Stable plastic corners

Elegant.  
High-quality.  
Versatile.

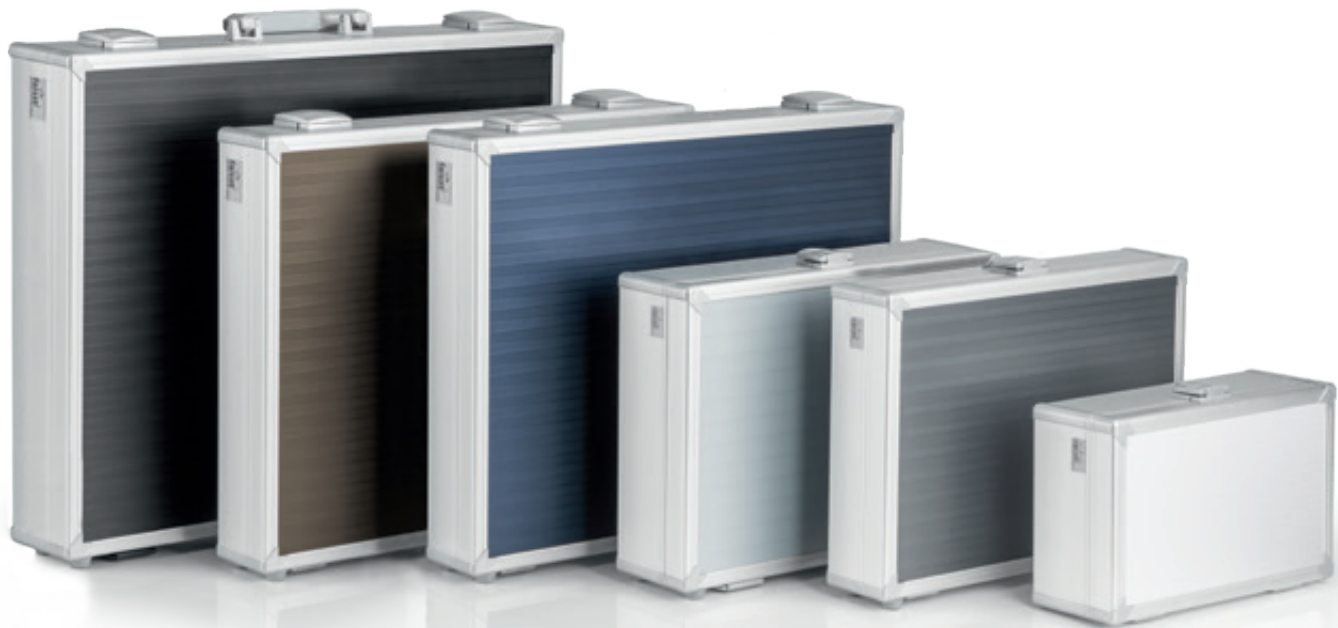


Metal case handle optional  
Elegant metal closure



# Alu Framecase

## Colour and equipment examples



CFV-7F80      CFV-6F60      CFV-6F60      CFV-3F80      CFV-3F60      CFV-1F80

## 12 Standard sizes

Individual sizes from 25 items

Height 60 mm		Height 80 mm		Height 100 mm	
CFV-1F60	240x145x40+20 mm	CFV-1F80	240x145x60+20 mm	CFV-1F10	240x145x80+20 mm
CFV-3F60	320x230x40+20 mm	CFV-3F80	320x230x60+20 mm	CFV-3F10	320x230x80+20 mm
CFV-6F60	440x340x40+20 mm	CFV-6F80	440x340x60+20 mm	CFV-6F10	440x340x80+20 mm
CFV-7F60	500x400x40+20 mm	CFV-7F80	500x400x60+20 mm	CFV-7F10	500x400x80+20 mm



Interior measurements (Length x Width x Height Bottom + Height Lid)



Umber / Silver



White / Silver | Metallic dark blue / Silver

## Corners and profiles



99120  
Silver/Silver



99200  
Silver/Black

## Surface Reef

The specially developed surface Reef is available in six different colours. The high quality PVC-Film in aluminium look is splash-proof and impresses with it's distinctive, unique design.



77803  
Metallic anthracite



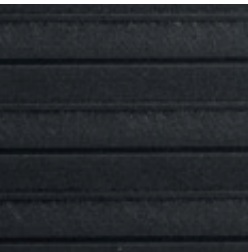
77100  
Umber



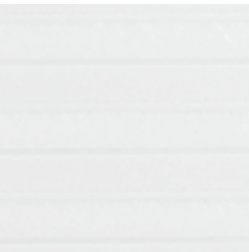
77120  
Metallic silver



77153  
Metallic dark blue



77200  
Black



77300  
White

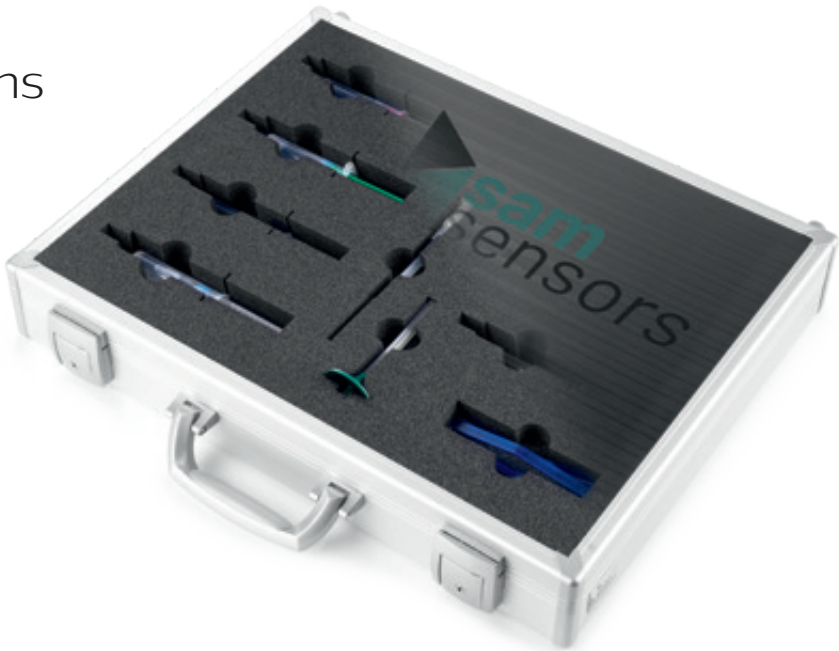
Use our versatile options for your advertising!

Versatile printing opportunities p. 60

We adapt every case insert to your products.

Custom-made foam inserts ensure optimal protection of the goods to be transported

Interior examples p. 62





Standard sizes  
from 1 item

Accessories p. 56

Branding options p. 60

Interior examples p. 62

Also available online:  
[www.faisst-shop.de](http://www.faisst-shop.de)



## Series Shell Case

Made of high-quality textile, the shell case convinces at first glance with its neat exterior. In addition to a detachable shoulder strap for more comfort, the stylish bags have four rubber feet for a secure stand. The high-quality zipper system ensures that the bag can be opened and closed smoothly and quietly.

With individually produced foam inserts, you ensure that all products stay securely in their place – our consultants will be happy to assist you!



Compact.  
Smart.  
Versatile.



### 3 Standard sizes

Individual sizes from 300 pieces

	(Exterior measurements)
CFS-1	380x270x80+40 mm
CFS-2	434x324x100+60 mm
CFS-3	484x374x125+75 mm

Individual deposits optional  
Surface made of robust and waterproof  
Oxford nylon fabric  
Ergonomic case handle  
Shoulder strap  
Four stable rubber feet  
High quality zipper system



Available from  
stock

Branding options p. 60  
Interior examples p. 62

Also available online:  
[www.faisst-shop.de](http://www.faisst-shop.de)

## Series Travel Line

Make your life simple, and from now on travel with light-weight luggage. This does not mean sacrificing anything. Plenty of space for your products, built-in wheels and a practical pull-out handle simplify transport and make the bags flexible in their use. The elegant design and light weight are further plus points for the soft bag series. Meanwhile their contents are properly protected from environmental factors and lighter blows by the robust external material.



**FTL-01 Travel Line**

ca. 630x320x270 mm (Interior)  
ca. 700x360x360 mm (Exterior)

**FTL-02 Travel Line**

ca. 450x330x170 mm (Interior)  
ca. 530x370x250 mm (Exterior)

Interior measurements (Length x Width x Height)

## Series Smart Case

Strong look, great price – these are two convincing arguments for using the new smart-case boxes from Faisst. The chic design draws attention to your company and offers plenty of scope for personalised graphic design. The 8 standard sizes offer plenty of space for your products, for which we can develop and produce well-fitting inserts. Smart-case boxes from Faisst are made from resistant ABS material. Thanks to our convenient production method, we can offer individual sizes, colours and designs even with medium purchase volumes – simply get in touch!

### 8 Standard sizes

Individual sizes from 250 pieces

#### Height 40 mm

FV-1S40	210x130x20+20 mm
FV-2S40	240x150x20+20 mm
FV-3S40	270x180x20+20 mm
FV-4S40	300x220x20+20 mm

#### Height 60 mm

FV-1S60	210x130x40+20 mm
FV-2S60	240x150x40+20 mm
FV-3S60	270x180x40+20 mm
FV-4S60	300x220x40+20 mm



Surface Grip  
in black



Use our versatile options  
for your advertising!

Versatile printing opportunities p. 60

Our experts will be happy to advise you on  
the right interior.

Interior examples p. 62



Available from stock

Also available online:  
[www.faisst-shop.de](http://www.faisst-shop.de)

Individual sizes from  
10.000 pieces



# Series X-Press Box

The compact x-press-boxes are great little helpers for internal transportation, the organisation and storage of small parts, and above all for shipping. These shipping boxes are made of indestructible polypropylene. Even highly sensitive products can be transported safely with the boxes.

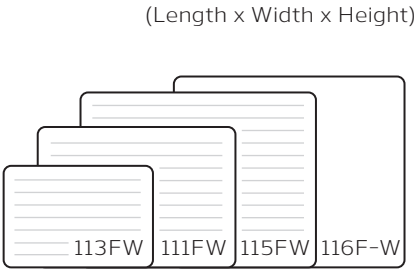
## Surface colours

White    Silver metallic    Black    Blue metallic

## 4 Standard sizes

	External measurements	Interior measurements
111FW	124x88x17 mm	98x60x14 mm
113FW	94x64x14 mm	62x31x10 mm
115FW	148x110x27 mm	125x84x20 mm
116F-W (only in white)	145x120x22 mm	125x95x20 mm

Packaging unit (PU) = 250 pieces



## Foam inserts

### White, 5 mm

111E	for box 111FW	PU 1000 pce.
113E	for box 113FW	PU 500 pce.
115E	for box 115FW + 116F-W	PU 1000 pce.

### Black, antistatic, 6 mm

111ES	for box 111FW	soft	PU 1000 pce.
111ES/2	for box 111FW	hard	PU 1000 pce.
113ES	for box 113FW	soft	PU 500 pce.
113ES/2	for box 113FW	hard	PU 500 pce.
115ES	for box 115FW + 116F-W	soft	PU 100 pce.
115ES/2	for box 115FW + 116F-W	hard	PU 1000 pce.

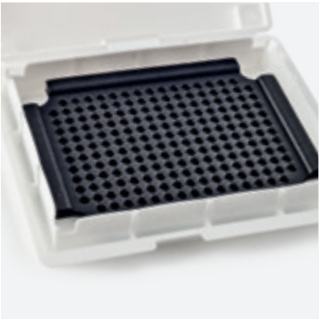
We manufacture your individual Insert on request



Foam inserts  
White, 5 mm



Foam inserts  
antistatic, black, 6 mm



Individual inserts

## Individual Print



The Express Boxes can be printed on the outside in the 1-, 2-, 3- or 4-colour.

Customized print from 5.000 items

We can print your express boxes with your company logo or coloured motif.

[Versatile printing opportunities p. 60](#)



Standard sizes  
from 1 item

Also available online:  
[www.faisst-shop.de](http://www.faisst-shop.de)

Show cases

# Alu Cube

The time has come for a new kind of furniture for your product presentation. At trade fairs, events, in the retail and customer space – do not miss the opportunity to show off your high-quality articles in an appealing atmosphere. With our new showcases and sales counters of the alu cube series, you can set up your show-room in next to no time.

The dimensions of the showcases and sales counters are optimally matched so that all parts fit together. The contemporary design, optimal illumination, the safe storage of your products at attractive pricing complete the entire package. Customised showcases are also available on request.



Noble.  
Contemporary.  
Impressive.



Filigree constuction  
Stable frame construction  
LED-Illumination optional



Individually printable surface „Wave“  
High quality built-in lock  
Safety glass optional





**24530-5**  
Standing showcase  
900x450x1910 mm



**24530-2**  
Showcase pillar  
450x450x1910 mm



**24530-3**  
Showcase pillar with plinth  
450x450x860+1050 mm



**24530-1**  
Showcase pillar divisible  
360x360x860+860 mm



**24530V1**  
Transport case for 24530-1  
900x450x1000 mm



Individual  
solutions on  
request



**24530-7**  
Hanging showcase  
900x250x800 mm



**24530-6**  
Glasscounter with sliding doors  
900x450x860+200 mm

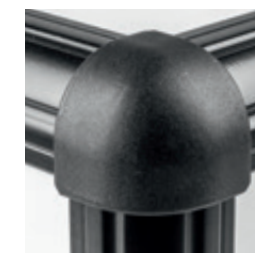


**24530-4**  
Plinth  
450x450x860 mm

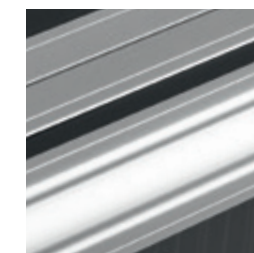
## Corners and Profiles



**99120**  
Alu Design - metallic  
silver corner



**99200**  
Alu Design - black  
case corner



**99120**  
Alu Design - natural  
aluminium profile

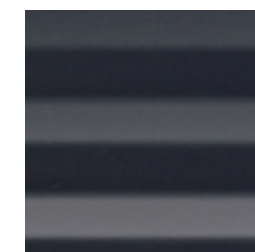


**99200**  
Alu Design - black  
profile

## Surface Wave



**76121**  
High gloss aluminium



**76203**  
Black



RAL colour spectrum



Exterior measurements (Length x Width x Height Plinth + Height Top)



# Accessories

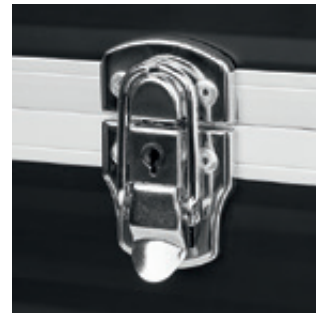
## Locking systems



**17-44-1**  
Standard lock, black



**17-44-2**  
Standard lock, metallic silver



**17-44-3**  
Shackle lock, chrome



**17-44-4**  
Butterfly lock, galvanised



**17-44-5**  
Combination lock, black



**17-44-6**  
Combination lock, silver



**17-44-7**  
Connection lock, chrome



**17-44-8**  
Lock small, alu-framecase,  
silver or black

## Wheels



**17-44-9**  
Plastic corner wheels, alu light



**17-44-10**  
Plastic corner wheels, alu design



**17-44-12**  
Metal corner wheels,  
black lacquered



**17-44-13**  
Industrial wheels, blue



**17-44-14**  
Multi wheels, plastic



**17-44-15**  
Telescopic stands

Everything is possible. Ask us about your desired accessories.



## Handles



**17-45-1**  
Standard handle, black



**17-45-2**  
Standard handle, metallic silver/  
grey



**17-45-2**  
Standard handle, metallic silver/  
silver and metallic silver/black



**17-45-3**  
Ribbon handle, black



**17-45-4**  
Standard handle, alu briefcase



**17-45-5**  
Hinged handle metal, silver



**17-45-6**  
Hinged handle plastic, black



**17-45-7**  
Edge handle metal, silver

## Trolleys



**17-45-8**  
Fold-out trolley handle, black



**17-45-9**  
Telescopic handle



**17-45-11**  
Clip-on trolley



**17-45-12**  
Add-on telescopic handle



# Interiour accessories

## Inserts



**17-46-1**  
Hard foam black



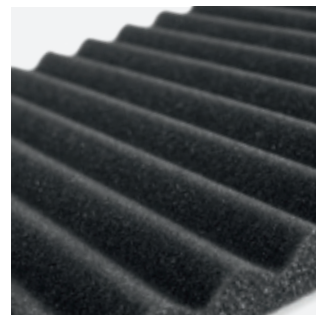
**17-46-2**  
Hard foam grey



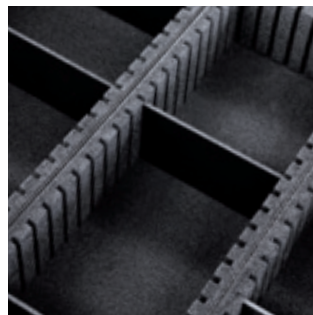
**17-46-3**  
Hard foam blue



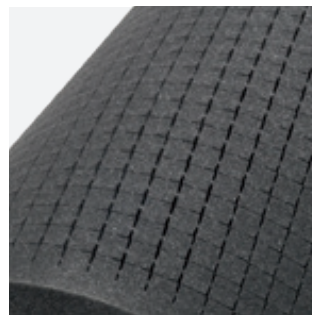
**17-46-4**  
Hard foam white



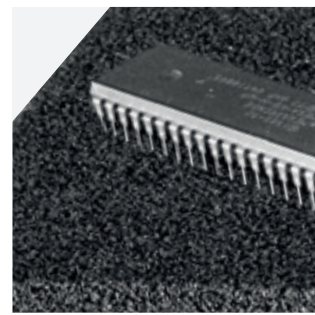
**17-46-5**  
Profiled foam anthracite



**17-46-6**  
Adjustable tray system



**17-46-7**  
Grid foam



**17-46-8**  
Conductive foam black

## Inside pockets



**17-46-9**  
Business card holder



**17-46-10**  
Compartment in the lid



**17-46-11**  
Elastic net pocket



**17-46-12**  
Organizer



**17-46-13**  
Removable product carrier



**17-46-14**  
Brochure compartment



**17-46-15**  
Brochure holder

The variety is endless.  
Ask us about your desired  
accessories.

## More features



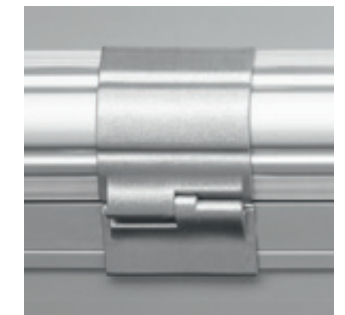
**17-47-1**  
Rounded corners



**17-47-2**  
Stacking corners



**17-47-3**  
Lift-off hinge



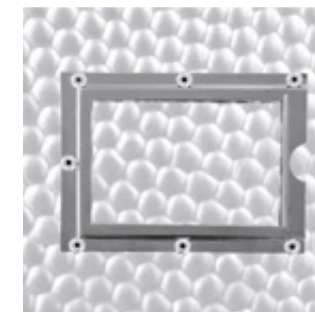
**17-47-4**  
Lift-off hinge, alu design



**17-47-5**  
Protection strips



**17-47-6**  
Front flap



**17-47-7**  
Label frame (DIN A6, A7, A8)



**17-47-8**  
Clear cover



**17-47-9**  
Rubber feet



**17-47-10**  
Cover holding hinge



**17-47-11**  
Cover holding tape



**17-47-12**  
Shoulder strap

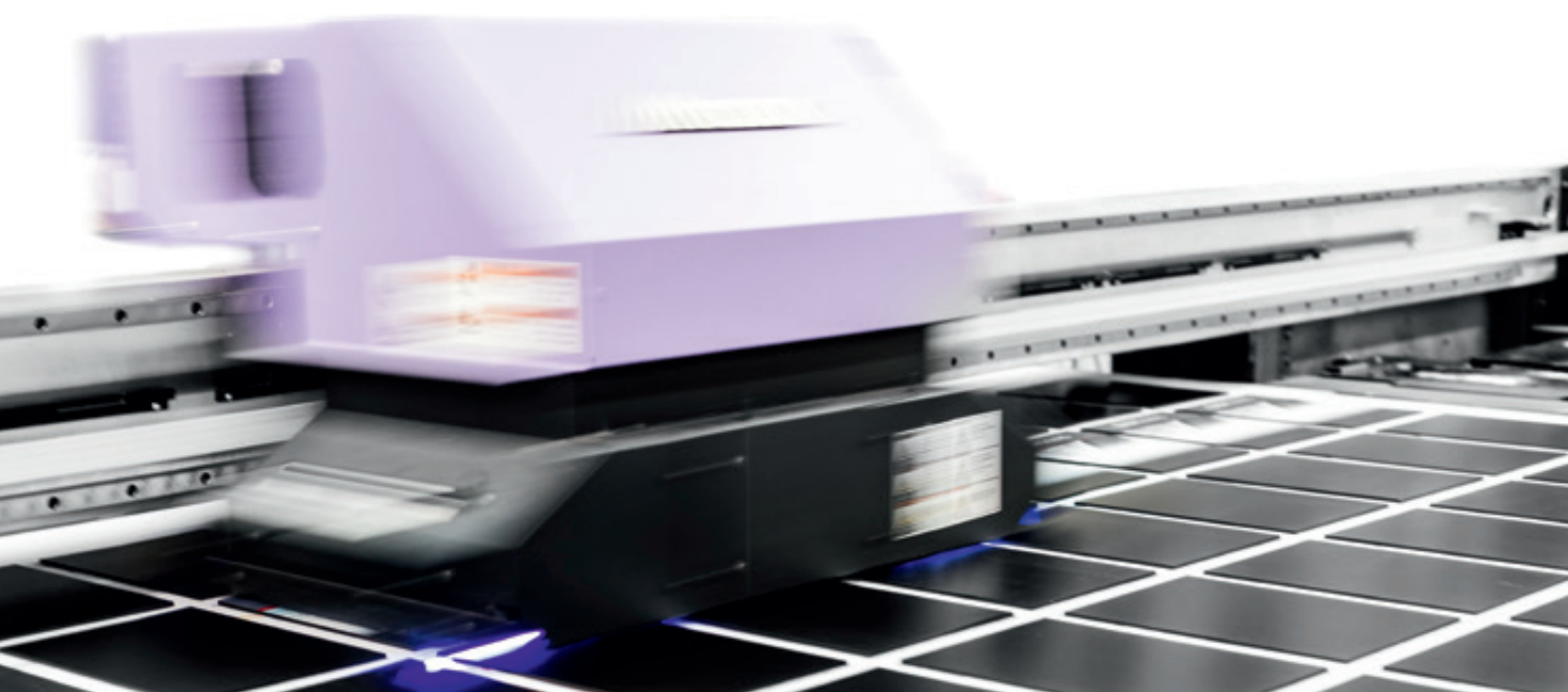




We adapt your logo or motif to the size of the case.

# Branding

The digital printing of your cases is especially suitable for picture motifs and company logos. Faisst is one of the few case manufacturers that can print the entire case using the digital printing process. Even small batch sizes can be economically realized in digital printing.



With our high-quality logo plates made of metal and our injection molded labels, you ensure a particularly exclusive branding of your cases.



//

**Our customers say:**

„Our cases can be easily recognised from afar thanks to the printing of the company logo across the entire external case surface – of course, this is a big advantage in gaining new customers“.

## Use our versatile options for your advertising!



Full or partial printing



Insert printing



3D Letters



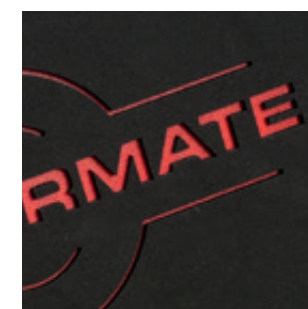
Logo plate



Embroidery



Laser engraving



Foam finishing

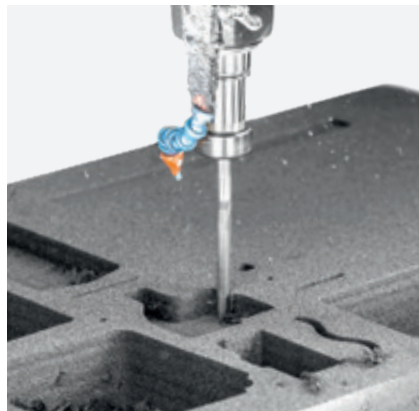
Do you require customised branding solutions?

Talk to us!

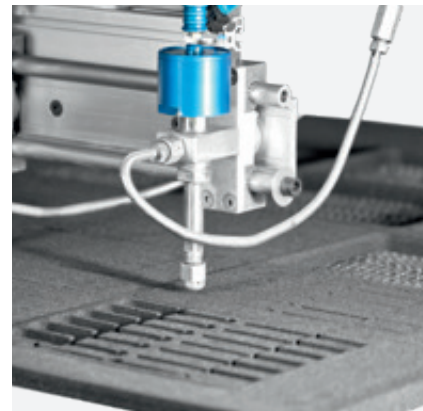




Computer-aided development of case inserts



Precise machining with the water jet machine or the CNC milling machine



We adapt every case insert to your products.



alu design



alu design



alu framecase



The accurate drawings allow a flexible adjustment of the insoles. The end result convinces with photo-realistic CGI renderings.



alu light

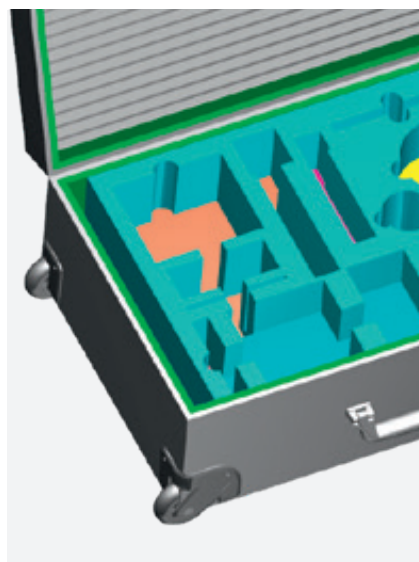


alu briefcase

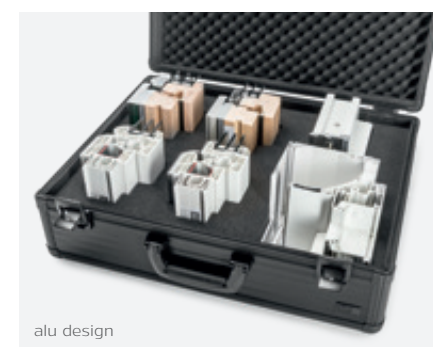
## 1. Clear chaos



## 2. Create order



## 3. Present



alu design



Removable inserts with handles



alu briefcase



alu framecase



alu robust



alu framecase





alu light



alu robust



vario case + alu briefcase



alu design

## HEATING AND SANITARY

## MEDICAL TECHNOLOGY

# Successful on the road

You can find more references on our website:  
**[www.faisst-cases.com](http://www.faisst-cases.com)**



***This is what our customers say:***

*„At Faisst we received the best advice regarding the different options of implementation!“*

## HEATING AND SANITARY

## DOOR AND WINDOW CONSTRUCTION



alu design



vario case



alu light



alu solid

## SECURITY TECHNOLOGY



alu design



alu light



alu design



alu robust





vario case



alu framecase



alu light



alu framecase

## DENTAL TECHNOLOGY

## TELECOMMUNICATION

# Solutions for every branch

You can find more references on our website:  
**[www.faisst-cases.com](http://www.faisst-cases.com)**



***This is what our customers say:***

*„We have been getting our cases for the field service from Faisst for many years and are very satisfied with the cases as well as with the advice and service!“*

## PLANT / MECHANICAL ENGINEERING

## OPTICS



alu robust



alu light



alu briefcase



alu briefcase

## MEASURING TECHNOLOGIES

## ACOUSTICS



alu briefcase



vario case



alu briefcase



alu briefcase





alu robust



alu design



alu light



vario case

## ELECTRICAL ENGINEERING

## BEAUTY / COSMETICS

# References

You can find more references on our website:  
**[www.faisst-cases.com](http://www.faisst-cases.com)**



***This is what our customers say:***

*„When it comes to cases, we recommend Faisst again at any time.“*

## TECHNOLOGY

## CLOTHING / TEXTILE



cargo air



vario case



alu light



alu design

## DRINKS / SPIRITS



alu design



alu briefcase



alu light



alu light



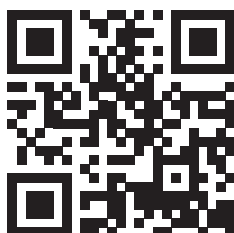
## Notes





Personal advice

☎ 00800 48800088 freecall



**Faisst GmbH**  
Carl-Benz-Str. 14-16  
75217 Birkenfeld/Germany

Fon +49 (0) 7231 42 80 89-0  
Fax +49 (0) 7231 42 80 89-67  
info@faisst-koffer.de